

**United
Way**



Routt County United Way

ANNUAL REPORT 2021



WELCOME

Dear Friends and Neighbors,

2021 was a banner year for several reasons. First, with the help of the Morgridge Family Foundation and you, our community, we were able to grant \$500,000 in funding to nonprofit programming in Routt County. Tuition assistance for preschool, youth programming after school and during the summer, financial stability initiatives such as supporting transportation and food initiatives, and mental health assistance along with crisis services were the areas on which we focused. So many of these programs are the backbone of a healthy community.

Our capital campaign project with our partner, Integrated Community, finished on time, on budget with all campaign monies raised. We moved into the new building in April and have found the new space highly effective and productive. Many nonprofits are utilizing our conference room that has hybrid meeting capability. Stop by to visit us!

Due to our major volunteer event, Day of Caring, being hosted outside, we were able to move forward with 33 projects, 261 volunteers including 22 organizations. It was a beautiful day resulting in saving nonprofits more than \$19,000 in labor costs. Our Volunteers of the year are highlighted later in the report in the volunteer section.

Summer brought a high alert for wildfire protection as we launched our wildfire emergency fund. Fortunately, we did not have to use those funds and they are in reserve for the 2022 summer wildfire season. We coordinated with our human service partners of Routt County Department of Human Services and LiftUp to assist those in need from the Sleepy Bear fire and electrical outage. When there is an emergency that affects residents, you can count on United Way to assist.

Fall brought our first ever \$50K match day and Boost for Youth which exceeded expectations. The Community Thanksgiving Dinner was impacted by the Covid pandemic for a second year, but we were still able to set up a drive-thru option and feed 520 people thanks to 65 on site volunteers and another 150 food volunteers. Our caring community continued their outreach through Routt County United Way by providing \$25 food cards to hundreds of families in need as part of our Holiday 365 program.

More than ever, we feel Routt County United Way is powered by the community for the community. Thank you, it is an honor and privilege to serve Routt County residents. We look forward to a powerful 2022 of service.



Kate Nowak
Executive Director



Carrie Helmcamp
RCUW Board
Volunteer President



TABLE OF CONTENTS

MISSION / VISION	04
2021 HIGHLIGHTS	05
PROGRAMS AND INITIATIVES	06
2021 GRANT REPORT	07
IMPACT AREAS	08
LEADERS IN GIVING	12
MOUNT ZIRKEL LEGACY FUND	13
FINANCIALS	14
STAFF AND BOARD OF DIRECTORS	15
WOMEN UNITED	16
OUR NEW HOME	18
PARTNERS AND SPONSORS	19



ADVANCING THE **COMMON** **GOOD** IN ROUTT COUNTY

Routt County United Way (RCUW) creates solutions to advance the common good in Routt County. We're improving education, strengthening financial stability, and making our community healthier. Our community-led solutions focus on four goals to make the greatest impact in our community: giving children a strong start through early childhood education, providing youth a safe, healthy and nurturing environment to promote successful youth, improving the financial stability of all Routt County citizens, and promoting access to mental health and crisis services. We mobilize change by funding local nonprofits through grants, encourage ideas and connection through partnerships, and foster initiatives that directly support RCUW's values in the community through our programs.

OUR **VISION**

We envision a county where all individuals and families achieve their human potential through access to education, opportunities to improve financial stability, and support to lead healthy lives.

OUR **MISSION**

Our mission is to unite people, ideas, and resources to advance the common good in education, financial stability, and health.

2021 HIGHLIGHTS

In April, we moved into our new building. We now have space to create community connections! Come by to see our new space and check out volunteer opportunities, and learn about grant funding for your non-profit, or connect with resources!

Volunteers of the year:

Reall Regan, Partners in Routt County
Danielle Skov, Soda Creek Elementary
Debra Sauermann, Routt County United Way

Thanks to the Morgridge Family Foundation's \$115K contribution and our generous community, we were able to fund our largest allocations in the history of Routt County United Way - \$500,000!

July brought a power outage to the Sleepy Bear trailer park affecting 13 homes. Routt County United Way was there with food gift cards and lodging assistance.





PROGRAMS AND INITIATIVES

We have signature programs that make a direct impact in the community.

By bridging the gap between our impact goals and the current state of the community, we can allocate our full efforts to the areas that need us the most.



DAY OF CARING

This event brings together many volunteers to roll up their sleeves and improve our community one project at a time!

In 2021 we had 261 volunteers, 22 organizations, and 33 projects throughout all of Routt County. A total of 692 volunteer hours saved \$19,784 in labor costs.



GIFT CARD FOOD DRIVE

Our Holiday Food Card Drive is designed to help alleviate holiday stress by collecting local grocery gift cards to provide a week's worth of groceries. In turn, families and individuals are able to pay a bill, fill up their tank with gas or purchase meaningful gifts for loved ones.

Thanks to you, our generous community, we gave out 825 food cards to 293 families, helping families stretch their December monies, promoting financial stability.



COMMUNITY THANKSGIVING DINNER

Our annual Thanksgiving dinner is a favorite of RCUW and the community. We welcome all walks of life and serve an impressive array of pies!

RCUW and 64 volunteers, served our Community Thanksgiving Dinner to 520 people as a grab and go dinner. We had 150+ food donations to make this happen. Special thank you to Doug, John and the kitchen crew for making this event go smoothly.

GRANT REPORT AND IMPACT AREAS

IN 2021, YOUR DONATIONS RESULTED IN **\$500,000**
INVESTED BACK INTO ROUTT COUNTY.

Together, we provided tuition assistance to seven preschools, helping children to learn important social, emotional, and literacy skills before kindergarten.

Together, we invested in nine youth programs, such as Totally Kids in Hayden, so they can build resilient youth and support students in and out of the classroom.

Together, we took a stand on financial stability and funded NW Colorado Health to provide additional home health services.

Together, we invested in mental health and crisis services, such as Advocates of Routt County, to help individuals understand the complicated issues surrounding domestic and sexual violence.

In our 2021 grant cycle, we invested in 32 local programs across Routt County supporting individuals and families in all walks of life. We couldn't do this without you, thank you.



YOU MADE
THE DIFFERENCE



\$164,000
invested in Early
Childhood Education



\$195,800
invested in Youth
Success



\$34,225
invested in Financial
Stability



\$105,975
invested in Mental
Health & Crisis Services



GIVING CHILDREN A STRONG START FROM BIRTH TO AGE EIGHT

EARLY CHILDHOOD EDUCATION

We invested **\$164,000** into early childhood education, spread between preschool tuition assistance, advancing teacher education, early literacy programs, and parent engagement. Preschools provide critical childcare for working parents from 7:30am to 5:30pm, Monday through Friday, allowing families to work towards self-sufficiency. Some preschools provide special education services for students with learning, physical, and emotional disabilities. Providing tuition assistance prepares children with limited resources the ability to gain social, emotional, and literacy development opportunities before Kindergarten.

Early literacy development is critical to life success. We support programs that provide education about early signs of dyslexia. We partner with the Dolly Parton Imagination Library so that every child from birth to age five in Routt County has access to free, monthly, age-appropriate books delivered right to their door. We also invest in the Newborn Network program to help enhance parent-to-parent networking to assist in advancing a child's development.

WHERE DID YOUR DONATION GO?

- Discovery Learning Center
- Family Development Center
- Hayden Valley Preschool
- Heritage Park Preschool
- Integrated Community
- North Routt Community Charter School (NRCCS)
- Soroco Preschool
- Steamboat Reading
- YoungTracks

**“THE SUPPORT FOR FAMILIES IN
NEED VIA TUITION ASSISTANCE
PROGRAMS HAS BEEN VITAL
ESPECIALLY IN COVID TIMES.”**

- JENNIFER CLEMENTS, PARENT



YOUTH SUCCESS

PROVIDING YOUTH A **SAFE,** **HEALTHY, NURTURING** ENVIRONMENT

We invested **\$195,800** into youth success, funding after-school, mentorship, and bully-free programs.

We support programs that build resilient youth, support meaningful mentoring relationships, youth resiliency education programs, and teaching ways to be bully-free. We provide scholarships to low-income children so they have the opportunity to be in a safe, supervised environment when parents or caregivers are not home. We fund programs that engage young people in summer academic support, increasing literacy, and spending time in the outdoors. These programs inspire our youth to use their strengths and lead healthy, productive lives without the temptations to experiment with drugs, alcohol, and tobacco.

We assist in providing pathways to academic support, social skills, and acquiring vocational skills by funding the Community Cultivation Program at Yampa Valley Autism. We help ensure the best possible outcomes for Routt County youth with special needs as they transition into adulthood.

WHERE DID YOUR DONATION GO?

- Boys & Girls Club of NW CO
- BookTrails
- Grand Futures Prevention Coalition
- NW Colorado Center for Independence
- Partners in Routt County
- Rocky Mountain Youth Corps
- South Routt Recreation
- Totally Kids
- Yampa Valley Autism

“FOR THE LAST FEW YEARS, ELIZABETH HAS BEEN HANDLING HEALTH CONCERNS, SELF-ESTEEM, AND DEPRESSION. ROCKY MOUNTAIN YOUTH CORPS (RMYC) HAD A POSITIVE IMPACT IN ALL AREAS OF HER LIFE.”

- PARENT



FINANCIAL STABILITY

IMPROVING **FINANCIAL STABILITY** OF ROUTT COUNTY CITIZENS

We invested **\$34,225** to agencies and programs focused on improving the financial stability in Routt County. An important component of becoming financially stable is having resources to be self sufficient.

We fund two programs in our community that aim to build financial stability for all Routt County residents in need. While our tuition assistance scholarships for seven preschools could fall within this category, we focus on two programs making strides to provide independence and care to our senior community.

We fund Northwest Colorado Health's Home Health program to provide home health services in Routt County. We also fund Meals on Wheels, a program through Routt County Council on Aging, that improves the financial stability of the county's seniors by ensuring seniors have adequate and healthy food resources in their homes on a regular basis.

WHERE DID YOUR DONATION GO?

- NW Colorado Health Home Health
- Routt County Council on Aging

"AN ACTIVE AND WELL-KNOWN MEMBER OF OUR COMMUNITY RECENTLY BECAME ILL WITH PNEUMONIA AT 88 YEARS OLD. UP UNTIL BECOMING ILL SHE LIVED INDEPENDENTLY IN HER HOME. AFTER SHE WAS HOSPITALIZED, HER FAMILY DECIDED TO GIVE HOME HEALTH A CHANCE. TODAY, THIS PATIENT IS HEALTHY AND INDEPENDENT AGAIN."

- NW COLORADO HEALTH REPRESENTATIVE



MENTAL HEALTH & CRISIS SERVICES

HELPING OUR COMMUNITY MEMBERS WHEN THEY NEED IT MOST.

We invested **\$105,975** into mental health services.

In 2020 our Mental Health partners reported a 70% increase in the services they provide. Routt County sees one of the highest suicide rates in the state of Colorado. Providing access to mental health services and supporting those in mental health crisis is critical for the health of our community.

We support crisis intervention programs, such as Integrated Community's 24/7 Crisis Interpretation program removing language barriers to emergency resources. We fund Mind Springs Health's Crisis Transportation program, making inpatient treatment more accessible. We invest in Reaching Everyone Preventing Suicide (REPS) programming, aimed at suicide prevention by intervening in mental health crises and providing programming to middle and high school youth. These agencies and programs are critical in Routt County.

WHERE DID YOUR DONATION GO?

- Advocates of Routt County
- Integrated Community
- Mind Springs Health
- North West Colorado Health
- Reaching Everyone Preventing Suicide (REPS)
- The Haven

"WITH SUPPORT FROM RCUW, ADVOCATES OF ROUTT COUNTY HAS DRASTICALLY EXPANDED ITS SOCIAL CHANGE PROGRAM, NOW COMPOSED OF INNOVATIVE EDUCATIONAL WORKSHOPS, AWARENESS CAMPAIGNS, EVENTS, AND SPECIAL PROJECTS."

- ADVOCATES TEAM MEMBER

LEADERS IN GIVING

Leaders in Giving is an opportunity for Routt County United Way donors to maximize their gifts of other like-minded individuals to achieve greater outcomes. Last year 230 Leaders in Giving contributed more than \$533,000 to Routt County United Way programs and initiatives. Generous supporters are from the Tocqueville Society, Summit Club, and Women United.

TOCQUEVILLE SOCIETY

The Tocqueville Society is a generous group of philanthropic leaders who choose to invest \$10,000 or more annually in RCUW.

SUMMIT CLUB

Summit Club members give \$500 or more annually. Summit Club members come from diverse neighborhoods, backgrounds, and careers to make our collective vision real.

WOMEN UNITED

Women United members are dedicated to giving, advocating, and volunteering in our community. Members make personal gifts to RCUW of \$100 or more annually.

MOUNT ZIRKEL LEGACY FUND

The objective of the Mount Zirkel Legacy Fund is to provide perpetual support for our community through Routt County United Way.

The endowment, under vigilant stewardship of the Routt County United Way Finance Committee, will provide a sustainable funding source for Routt County United Way operations, programs and investments into the community. Only earnings will be used to support the work of Routt County United Way, while the principal will remain intact.

Please contact Kate Nowak, Executive Director, to learn more.



LEGACY FUND

ROUTT COUNTY UNITED WAY

WE HONOR THE FOLLOWING PARTICIPANTS IN THE MOUNT ZIRKEL LEGACY SOCIETY TO DATE:

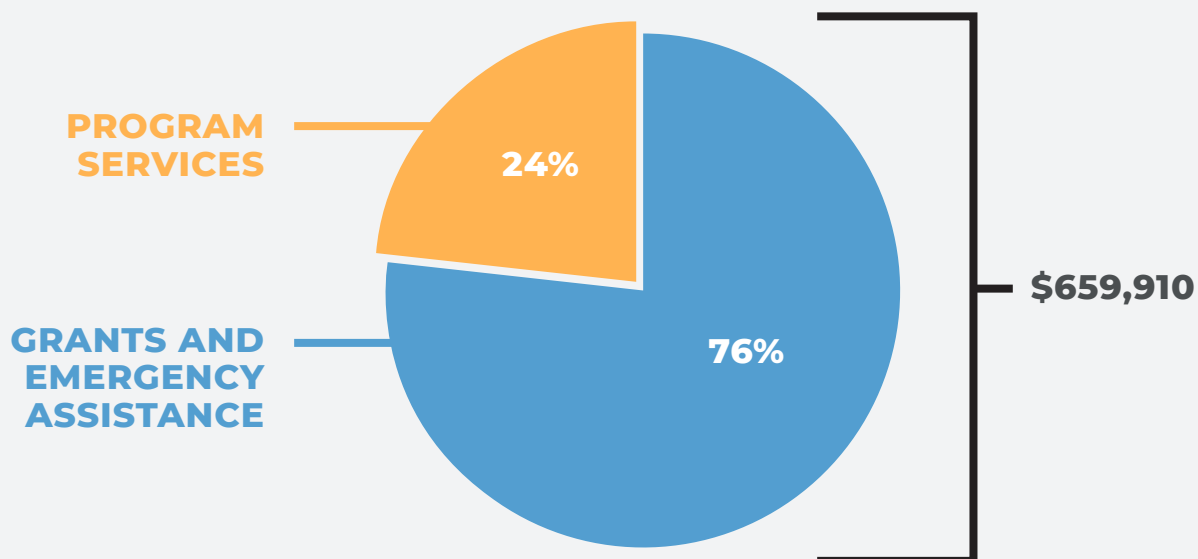
DOUG SPRENGLE
DR. WILLIAM AND JUDITH EMERSON
SIDNEY MOON
LYNN AND ALAN SIDMAN





2021 FINANCIALS

WE INVESTED **\$659,910**, THE EQUIVALENT OF **91% OF OUR TOTAL REVENUE**, TO OUR COMMUNITY. THANK YOU!



We protect and honor donor contributions to other nonprofits by verifying each agency's IRS eligibility, Colorado state registration, and good standing. We review the leadership and financial statements for each organization we fund. We are financially strong with \$1,708,312 in net assets as of August 31, 2021. 9% of our revenue went into administration and fundraising efforts, supporting everything we do.

Our fiscal year is **September 1 – August 31**.

To view our complete 2021 financial information, such as audited financial statements and tax for 990, visit our website RouttCountyUnitedWay.org.

OUR TEAM

RCUW STAFF AND BOARD OF DIRECTORS



We are governed by a volunteer Board of Directors, whose responsibilities include: guiding our Director, ensuring effective management and financial stewardship, representing RCUW in the community, bringing the community's voice to our decision-making, and maintaining the community's trust in the organization.

STAFF

KATE NOWAK

Executive Director

LACEY MANZANARES

Operations Manager

JENNIFER BRUEN

Community Impact Coordinator

BOARD

CIARA BARTHOLOMEW

Finance/Business Manager,
South Routt School District

LESLIE GIBSON

Sales & Marketing Special
Projects Supervisor, Steamboat
Ski & Resort Corporation

KAREN GOEDERT

Director of Employee
Engagement Big Agnes/BAP

ERON HAUBERT

Assistant Principal,
Strawberry Park Elementary

CARRIE HELMCAMP

Owner, Mad Creek BBQ

DAVE KINNEAR

Community Member

DAVID LUNDEEN

Community Member

DEBRA SAUERMANN

Community Member

ROBIN SCHEPPER

Communications Consultant,
Wayfinder Inc.

ALAN M. SIDMAN

Community Member

MAGGIE TAYLOR

Director of Youth and
Connectional Ministry, Heart
of Steamboat

ADAM WILSON

Market President, Vectra Bank

TOM VALAND

Program Coordinator,
Fatherhood Program of Routt
County

ROUTT COUNTY UNITED WAY WOMEN UNITED®

Women United (WU) of Routt County United Way is a philanthropic-oriented group of women dedicated to giving, advocating, and volunteering for the most vulnerable in our community. They are mothers, sisters, wives, daughters, aunts and grandmothers with unique qualities, talents, experiences, and dreams. They are driven to inspire, encourage and empower women to become agents of change in Routt County through giving, leadership, and volunteerism.

For the past six years, WU has provided events and programs to meet critical needs in the county. They are committed to alleviate hardships for families and individuals living and working in the region. In 2021, they offered events focused on early childhood education and youth success. Below are a few of Women United's 2021 noted successes:



DOLLY PARTON IMAGINATION LIBRARY

A program to improve Routt County's early childhood literacy rate, we partner with DPIL to provide free books monthly to 634 children ages birth to five in Routt County. 489 kids have graduated the program over a 5 year period, and we've signed up hundreds of children in 2021!

BACKPACKS AND BUBBLES

We brought together WU members to fill 68 backpacks with school supplies for Routt County elementary students in need.

STORYWALK®

A young reader program newly installed along the core river trail. It was launched in 2021 in partnership with Bud Werner Memorial Library and the City of Steamboat Springs. A new book is installed every month. Check it out!

SIP AND PAINT

A fundraising event where nearly 60 women gathered over 2 nights to paint, sip wine, and raise funds. The event raised \$4,358.44 for StoryWalk®.



ADDITIONAL AMAZING SUCCESSES

- An online St. Patrick's Day happy hour
- Snowshoeing and cross-country ski outings
- In May, on Day of Caring, Women United volunteered at LiftUp
- In August, the Women United signature Backpack and Bubbles event took place at the Botanic Park. We also delivered school supplies to North Routt, South Routt, and Hayden schools
- In September, WU supported United Way at Mountain Tap for Token Tuesday
- In October, we co-sponsored The Thrive Conference for women only in Hayden. Over 200 women attended!
- The holiday party drew over 40 attendees
- Our newsletter consistently hovers between 60- 65% opening rate. 123 subscribers. The Facebook Group has 56 members, 173 Page Likes and 192 Follows
- WU secured sponsorships with: Alpine Insurance, Yampa Valley Bank, Vectra Bank, Glas Defryn Ranch, and Colorado Event Rentals

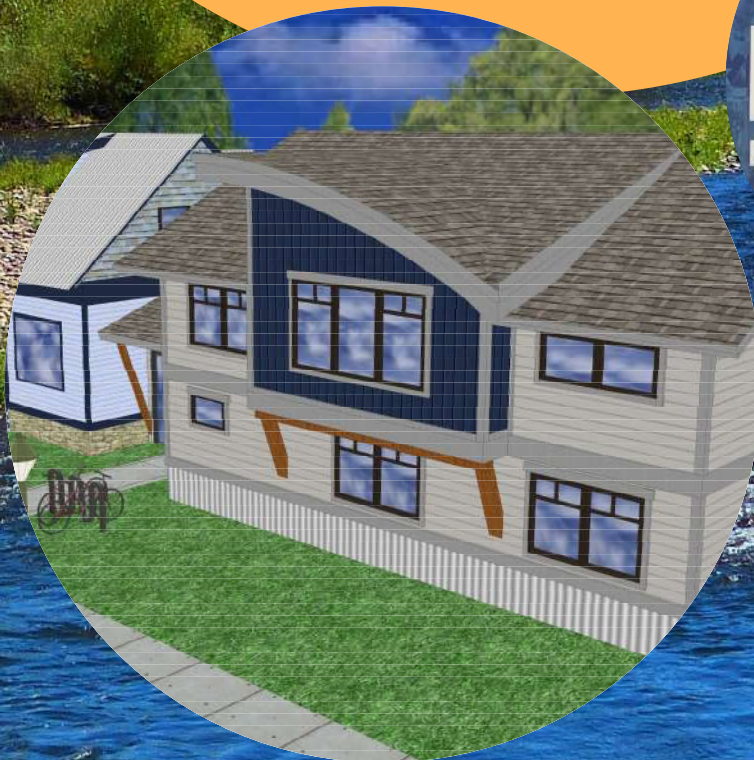


OUR NEW HOME

In 2019 planning began at 443 Oak Street to expand our historic home office. This included tearing down our dilapidated garage and building a new addition. We started our capital campaign in January of 2020, right before the CO-VID 19 pandemic shut down Routt County. Fortunately, our community rallied and supported our efforts to expand our nonprofit center. By January 2021 we completed our capital campaign and moved into our new space this past April. We thank our community and our expansion team for completing our capital project, on time, on budget with all funds in house.

A true success!

We are more efficient and productive having proper space to do our good work in the community. Our Brinkman and Kruse conference rooms are well used by numerous nonprofits. We can't wait to show you the renovations and expansion, so please stop by!



LIVE UNITED
Routt County United Way

THANK YOU TO OUR PARTNERS AND SPONSORS



CORPORATE GIVERS

Allterrain Excavating, Inc.
Alpine Bank
Alpine Lumber Company
Alpine Insurance Agency, Inc.
Amazon Smile
B & K Distributing
BAP/Big Agnes
Blizzard Broadcasting
Central Park Management
Chevron
Colorado Group Realty
Charitable Foundation Inc.
Community First Foundation
Colorado Mountain College
Comcast
Cook Subaru
Debbie Aragon, State Farm
Insurance Agency
Déjà Vu Boutique
Dominion Energy
Erickson Financial Services
Eclipse Window Tinting
Fair and Square Construction
Family Development Center
Federal Express
Fox Construction

Hair on Earth, Inc.
Hayden School District
Heart of Steamboat United
Methodist Church
Hensel Phelps Construction CO
Hill Country Veterinary Hospital
Horizons
Interiors with Altitude
Kazaney, LLC
Kroger
Mountain Tap Brewery
Mountain Valley Bank
Moxie Home Consignments
Microsoft Matching Gift Program
Mind Springs Health
Mountain Resorts
Noodles & More Saigon Cafe, Inc.
Northwest Insulation LLC
OD Steamboat
Resort Group
Rotary Club of Steamboat
Springs
Rocky Mountain Youth Corps
Routt County
Snow Country Construction
Ski Town Lion's Club

South Routt School District
Sports Travel Consultants, Inc.
NCAA All Start Golf
Steamboat Select Insurance
Steamboat Ski & Resort
Corporation
Steamboat Springs Chamber
Resort Association
Steamboat Springs School
District
Steamboat Entertainment, Inc.
Steamboat Sticker Company
Teresa Weinman Insurance
Agency Inc.
Twentymile Coal Company
THPK
UCHealth YVMC
United Parcel Service
Vectra Bank Colorado
Waneta Apartments
Wells Fargo Bank
Western Slope Accounting Group
Wild West Balloon Adventures
Xcel Energy Hayden Station
Yampa Valley Bank
Yampa Valley Electric Association



CONTACT INFO



Routt County United Way

routtcountyunitedway.org
970-879-5605

443 Oak Street
Steamboat Springs, CO 80487

P.O. Box 774005
Steamboat Springs, CO 80477

